

# Fact Sheet

## Timeline

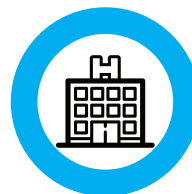
- 2006** Acquisition of six hospitals: North West Private, The Valley Private, Gosford Private, Lingard Private, Belmont Private and South Eastern Private
- 2007** Acquisition of five hospitals: Currumbin Clinic, Dubbo Private, La Trobe Private, Toronto Private and Maitland Private
- 2009** Acquisition of Brunswick Private and Hunter Nursing
- 2011** Acquisition of Mayo Healthcare Group
- 2012** Acquisition of Hurstville Private
- 2014** Acquisition of Brisbane Waters Private, Marian Centre and Townsville Private
- 2016** Opening of Robina Private
- 2017** Acquisition of 13 hospitals: Abbotsford Private, South Coast Private, Shellharbour Private, Bega Valley Private, Forster Private, The Hills Clinic, Westmead Rehabilitation, Eden Rehabilitation, Gympie Private, Mackay Rehabilitation, Boulcott Private, Hironnelle Private

## Key Statistics



### 35 hospitals

across 5 states, 4 capital cities and major regional areas in Australia and 1 in New Zealand



### 7,000 employees

working in Health Care's portfolio of businesses



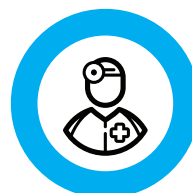
### 2,500 beds

in some of Australia's premier private hospital facilities



### Over 630,000 patient days

per annum



### Over 110,000 operations

performed per annum



### Over 2,500 babies

delivered each year